



Get In Touch

Student Campus
17-19, Patrick Street
V94PX46
Limerick, Ireland
info@studentcampus.ie
+353 61 414 732

Student Campus Marketing Office
3, Michael Street
V944X26
Limerick, Ireland
sales@studentcampus.ie
+353 61 214 625



SCAN
FOR
MORE

www.studentcampus.ie

STUDENT CAMPUS

**BROCHURE
2023**



01 Welcome to Student Campus 04
02 Academic & Marketing Team 06
03 Teaching Method 08
Levels: How does it works? 09
Cycles Calendar 09
04 Why choose Student Campus? 10
05 English Language Courses 12
General English course 12
IELTS & CAE preparation course 13
06 School Accreditations 14
07 Student Campus Gallery 16
08 Why choose Limerick? 18
08 Nightlife 19
09 Getting Around Limerick 20
10 Extra Activities 22
11 Assistance & Services 24
Health Insurance 24
Accommodation 24
Exclusive Pick-Up Service 24
Student Support 25
Bank Account 25
12 Visa Information 26
13 Refund Policy 27
14 Student Campus App 28
Attendance 28
Request Form 28
Media Channels 29
15 Additional Information 30
Student Visa Requirements 30
Visa Orientation / Induction Day 30
Job Opportunity 31
Flight Tickets 31
Monthly Average Expenses 31

Welcome to Student Campus

Student Campus is an language institute based in Limerick, approximately 200km from Dublin. Limerick's not a small city and it's worth a visit as it's the 3rd largest city in Ireland with active nightlife, lots of attractions and historical places. It is indeed quieter than the capital, Dublin, but it's a great option for those who enjoy this lifestyle.

Immersion with the Local Culture? Limerick's the right place!

Because Limerick is not a typical touristic destination place, it is great to immerse yourself in Irish culture. With such high demand in different cities, Limerick is the right place to study and work in Ireland.

“ Our college is well situated in the heart of the city, surrounded by retailers, restaurants, bus stops and the historic Milk Market. All locations are easily reached on foot or by bus from popular neighbourhoods.

Facing a brand-new culture is often a challenge, however, the people and the school you choose to help you with this challenge can utterly shape your experience! Give yourself the chance to live abroad, to experience a brand-new culture and improve your English skills with indoor and outdoor activities. ”



Academic & Marketing Team

Hello,

First of all, welcome to Student Campus! My name is Iva from the beautiful island of Puerto Rico. I love travelling and have lived in the United States, Colombia, England and now Ireland. I moved here to study eight years ago and have found a home away from home in this country.

Languages are one of my passions and I speak fluent Spanish, and basic Brazilian Portuguese and French. I believe language can help us find common ground even through our differences.

At heart, I am and will always be an educator and use my vast experience in education to help you achieve your goals. We are delighted to have you join our lively, multicultural school community.

I look forward to seeing you soon!

Dr Iva Yates
Director of Studies



Leszek Ochalek
Assistant Director

Hello students,

For almost two years, Student Campus has provided English courses for students from all around the world.

Our school provides a friendly and professional atmosphere, with excellent learning facilities and a dedicated team giving each student individual attention.

We hope you will have the best possible experience whilst studying at Student Campus and also enjoy the beauty of Limerick and the surrounding area.

Leticia Bastos
Director of Marketing and Sales

Hi there!

With magnificent support provided by our Marketing team, you will be able to embark on this fantastic experience of going on an exchange programme on the Emerald Isle.

From setting up your visa appointment at the Immigration Office to accompanying you to the bank to open your Irish bank account, our team will be there to back you up on whatever needs you may have.



Teaching Method

The focus in our school is to encourage communication and every activity focuses on developing the four skills of language learning. All students who study with Student Campus are provided with a course book for their level.

Our teachers have a wealth of knowledge and experience and are excited to apply this to their lessons while helping students achieve their objectives. They will guide you through the book using a variety of methodologies and activities to ensure that you feel confident using the target language.

Teachers incorporate Irish culture into their lessons so you can learn more and immerse yourself into your new home!

Classes also go on short excursions to locations around the city. These outings are linked to the topic of the unit to help students get a true experience of the language.

Classes have weekly tests to assess student progress and this allows you to identify areas in which you need to improve. Teachers and the DoS are available to discuss progress and set achievable goals.



Levels: How does it work?

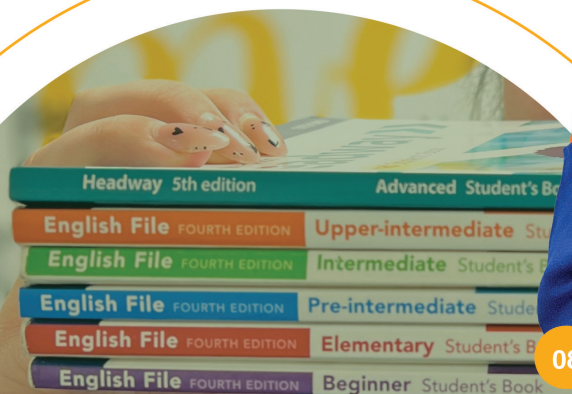
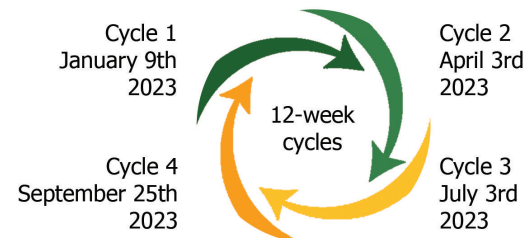
The students take a 12-week course (at least) and can move up if they get their teachers recommendation plus progress test (after 6 units) with more than 75% in all parts, speaking, grammar, writing, listening and reading.

Another way is after the progress test with teacher's recommendation and 90% or more in 3 consecutive file tests in all parts, speaking, reading, writing, grammar and listening. The third and final way is if they pass the final book test in all parts with 75% or more. Then the student joins the waiting list to move as recommended by their teacher.



Cycles Calendar

The academic calendar is based on a 12-week cycle studying system, for both classes. With every change of cycle, you will also change teachers, so you have the opportunity to experience different accents and styles of teaching.



Why choose Student Campus?

Our school is located in the heart of Limerick City. You have everything you will possibly need within reach, which will make your stay easier. Restaurants, shops, leisure facilities, etc. can be reached by a short bus journey or on foot.

The building has four floors with plenty of space to develop your language skills.

At Student Campus, you will also find a library, computers, television, games, and lounge space to relax and enjoy your free time. In our canteen, you can buy food and sit comfortably whilst you enjoy your meal.

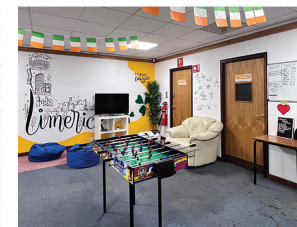
All floors have access the internet using WIFI. In addition, the library has a vast collection of books for you to use and consult.

At our school, students have all the support and assistance from the day they set foot on the island until their departure.

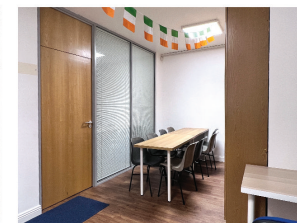
We believe that a cultural exchange is just as important as learning the language itself.

Our academic department is managed by an experienced Director of Studies and a team of well-qualified teachers.

✓ Main Building



✓ Marketing Office



English Language Courses

When you arrive, you will take a placement test and will be placed accordingly based on the CEFR scale. Continuous enrolment means that classes start every Monday throughout the year. Students typically spend approximately 12 weeks in the level that they start. Each student learns differently, however, and this may vary.

General English Course

Tuition Hours: 1 to 25 weeks (15 hours per week)

Class Size: 15 students maximum per classroom

Start Date: Every Monday (except holidays)






Timetables:

Morning - Monday to Friday
from 9:00 - 10:30 | 10:45 - 12:15

Afternoon - Monday to Thursday
from 13:00 - 15:00 | 15:15 - 17:00

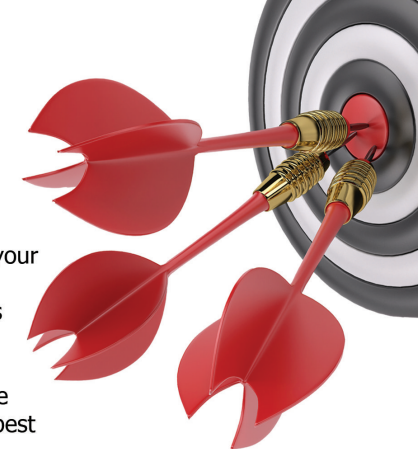
Levels:

Beginner > Elementary > Pre-Intermediate > Intermediate
Upper-Intermediate > Advanced > Proficiency

-  Develop the four skills (reading, writing, listening, and speaking) by using authentic and functional language
-  Enhance your communicative skills to communicate effectively in the classroom and the real world
-  Develop your knowledge and understanding of English grammar and apply it accurately
-  Expand your vocabulary beyond the textbook
-  Advance your knowledge of English so that you have the option of further study

International English exams such as IELTS or CAE are often required by universities or employers to demonstrate your command of the English language. At Student Campus, we have a range of classes to help you prepare for these exams and achieve the results you want.

These courses will improve your English language skills while helping you understand how each exam is marked and the best approach for each of the papers and question types.



IELTS

- At Student Campus, we aim to ensure that all students achieve the grade they require to achieve their goals.
- Students with an Intermediate to Advanced (B1-C1) knowledge of English are allowed to enrol in this program.
- This program focuses on the development of the four skills (reading, writing, listening and speaking) while developing techniques to excel in each of the papers.

CAMBRIDGE

- The Cambridge English: Advanced (now known as C1 Advanced) is a Cambridge English Qualification that demonstrates that you can use the English language at an Advanced level. It is a qualification sought after by universities and employers alike.
- Students with an Advanced (C1) knowledge of English can enrol in this program.
- This program familiarizes students with the demands of the exam while developing the four skills (reading, writing, listening and speaking) and techniques to excel in each of the papers.

IELTS & CAE Preparation Course

Tuition Hours: 1 to 25 weeks (15 hours per week)

Class Size: 15 students maximum per classroom

Start Date: Every Monday (except holidays)

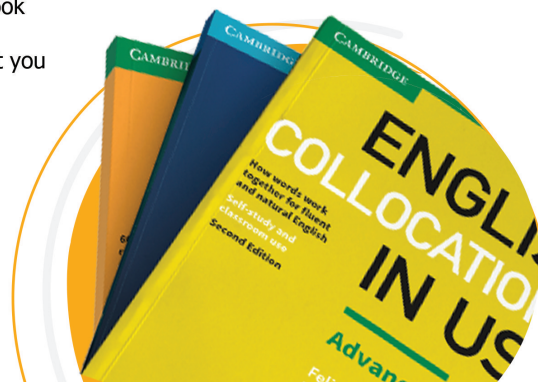
Timetables:

Morning - Monday to Friday
from 9:00 - 10:30 | 10:45 - 12:15

Afternoon - Monday to Thursday
from 13:00 - 15:00 | 15:15 - 17:00

Levels Required:

Intermediate > Upper-Intermediate
Advanced > Proficiency



School Accreditations

This cover is intended to meet the needs of non-EEA students traveling to Ireland in the event of accident or illness.



It also intended to meet the needs of students attending educational institutions that are not financially supported by the Irish state where there is a legal obligation to hold this Insurance. In the event of an institution closing due to financial issues or its accreditation is withdrawn and you are unable to finish your course, you will be covered.



Progressive College Network

Progressive College Network is a newly formed organization to meet the demand for an alternate representative body for the private college community in Ireland, which tries to promote Ireland as a high-quality education destination.

Student Campus is a member of this organization.



The International English Language Testing System (IELTS) measures the language proficiency of students who want to study or work where the English language is used as a means of communication.



ELT Ireland is a network for professionals involved in all aspects of English Language Teaching that promotes learning, development and best practice through the sharing of knowledge and experiences.

The purpose of ELT Ireland is to establish a network of teachers, supervisors, managers and researchers who are committed to improving teaching in English as a Foreign or Second Language in Ireland.



The fact that a provider and courses are listed on ILEP means that in accordance with Ireland's student immigration policy, attendance at that college in respect of one of their listed full-time courses on ILEP is an eligible purpose for a non-European national coming to Ireland.

ILEP does not guarantee the quality of the institution but if a provider is listed on ILEP they will have met certain criteria including the mandatory provision of learner protection in respect of enrolled non-European students.



TIE has been designed for all students over the age of 18 of all abilities and motivations following either long or short courses in language schools or other educational institutions.

TIE is a learner-centred exam which is flexible, i.e., designed to recognize and accommodate the needs and interests of each learner whatever their level of English, age, cultural or educational background. The test is task-based with the content chosen by each individual learner and can, therefore, be used to assess learners.

The University of Cambridge offers students the world's most recognised range of English qualifications in the form of Cambridge ESOL examinations.



Cambridge Assessment
English
Authorised Exam Centre

Cambridge English (also known as ESOL) is a department of Cambridge University. Their English exams: Proficiency (CPE) and Advanced (CAE) are recognised around the world by thousands of Employers, Universities and Government Ministries as proof of ability to use English.



Student Campus Gallery

From Japan to Brazil or from South Africa to Europe, Student Campus can help you to live your dream on the beautiful Emerald Isle.

Uchral Odontsetseg
Mongolian Student



"Hello everyone, I'm a Mongolian. My first impression regarding the school is about the amazing atmosphere. Also, I am satisfied with my IELTS preparation course. This is one of the big reasons why I've chosen Student Campus. The biggest advantage is the class schedules are suitable for students who want to study and work during the programme. In conclusion, I highly recommend Student Campus. They're treating you very well."

Samuel Cardoso
Brazilian Student



"I arrived in Ireland in September 2022 to study at Student Campus. I was looking for an institution that delivered quality and affordable value. The school's director is a sweetheart, super friendly and attentive, along with all the Student Campus employees who are welcoming and always strive to give you the best experience."

Heyrin
South Korean Student



"First, I worried about the price and moving from Dublin to Limerick. The school is perfect. The staff team are very kind and friendly. The Class is dynamic and the teachers made me speak English more and more. (At that time, I had a hard time speaking English). If I earn more money, I will stay here longer."

Leandro
Spanish Student



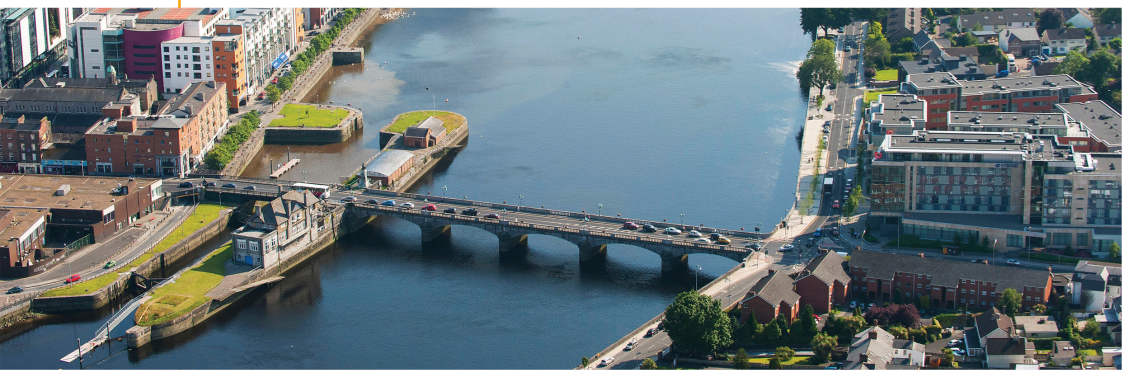
"Going to Student Campus was the best decision I could have ever made. It wasn't easy to start a new life far from home, but Student Campus helped me and made it easy for me. They helped me to achieve all my goals and I will always thank them all their effort"



Why Choose Limerick?

Over the last number of years, Limerick has really concentrated on improving the city, especially near the river Shannon which encompasses the city. You can find lots of monuments and statues as you walk along the river.

There are lots of new bars where you can stop in for a quick drink after a long day of exploring the city and feeding the numerous pigeons that gather at the river. It is a very beautiful place to go for a walk.



The University of Limerick is also known worldwide and one of the top 3 colleges in Ireland for its idyllic campus. You can stroll along the canal walk out to UL after a long day of studying. The campus itself is enormous so it is full of beautiful nature walks and buildings.



King John's Castle is also a fantastic attraction in Limerick. It uses 3D touch technology and life-size models to help you relive over 800 years of dramatic local history. It is definitely something to add to your bucket list.

Don't miss out on that!



Nightlife

The nightlife in Limerick has really picked up recently. With a lot of new pubs and nightclubs now open, Saturday night is full of fun. 101 Limerick and Nancy's are a popular choices amongst students for a night out.

If you are more interested in Rock n Roll music, then Dolan's Pub is the place for you. You are guaranteed to enjoy your night if you go there. Excellent music and some of the nicest people you could find.

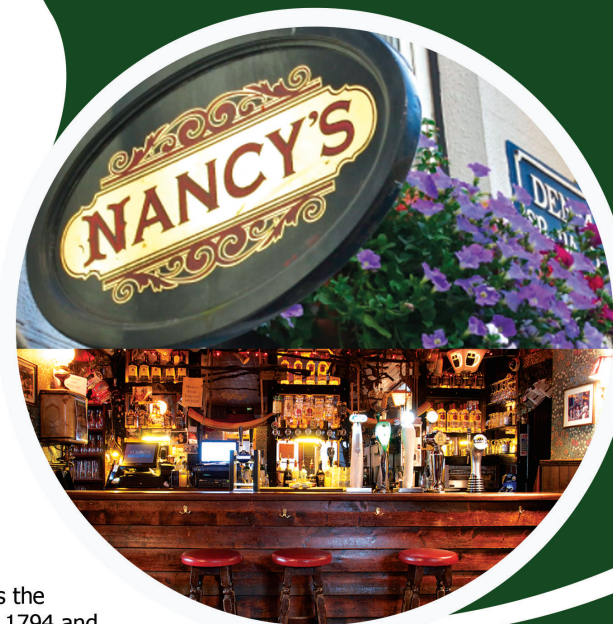
Located near the castle, JJ Bowles is the oldest pub in Limerick - dating from 1794 and the building dates from the late 1600's.

Traditional Irish Music is one of the main attractions in Limerick. Don't be surprised if you walk into a bar/pub and find a group of people playing typical Irish instruments. It creates a great atmosphere and everybody enjoys it.

After a while you will find yourself clapping along to the music, laughing and joking with everybody in the pub.

If you want to get into to the spirit, why not go out and buy a musical instrument for yourself? Tin whistles are inexpensive and can be found in many shops.

"The tin whistle, uilleann pipes and the banjo are just some examples of excellent Irish instruments."



Getting Around Limerick

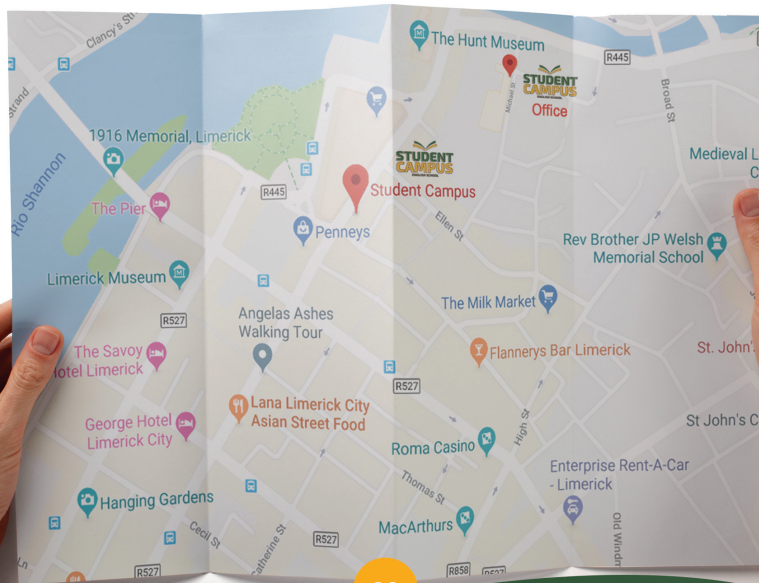
Transport in Limerick is very convenient compared to other cities in Ireland.

With quite a lot of different options to choose from, it will be no problem for you to get around. The 304 bus is one of the most popular bus routes in Limerick which takes you from the city centre, out to the Crescent Shopping Centre (for all your shopping needs) and also to the University of Limerick.

The University of Limerick is home to so many beautiful attractions that you simply must visit while you are here.

Also, with a lot of double decker buses driving around Limerick, you will have no problem finding a seat on the bus after a long day of studying and/or working. There are so many seating options that nobody is left without a seat.

Friendly bus drivers and an affordable price means that the bus is sure to be your number one option.



The TFI Bikes service is available all year round, 7 days a week, from 5am to 12.30am, although bikes can be returned to available stands at any time of the day.

There are TFI Bikes found in many different parts of the city and are very cheap to rent for the day.

You don't have to return your bike to the place where you rented it. It can be left at any TFI Bikes bike station in the city.

If you are eco-friendly and would prefer to cycle, this is a great option. Not only are you exercising but you are also helping the environment - killing two birds with one stone!

Taxis are also a handy option. It's easy to find a taxi rank located in the busiest sections of the city. There is one right outside the train station which will come in handy after your travels to other counties.

The train station is another option if you would like to enjoy a trip out of the Limerick for the day.



Limerick Colbert
Train Station



Extra Activities

We at Student Campus believe that learning English can also be fun and enjoyable. As part of this amazing experience of learning, the student can also attend free extras classes, designed especially to help you improve your English skills.



“ Every day you will find a fun and different activity after regular classes all designed according to your needs to help you improve your English skills faster! ”

Students can attend Grammar classes to get a hang of that grammar tense that they find the trickiest. Those who are only starting can also get the keywords that help a lot over a daily basis in the vocabulary classes which focus on conversational skills that will further aid you to speak to natives outside of the classroom and pick up on different expressions used by those walking on the streets.

If you need help with your CV, we also have a CV workshop, where you can bring your CV and get tips on how to build, change or even improve it.



This motivating and engaging class allows beginner students to receive the support they need to advance their knowledge of the English language using a variety of techniques.

Do you ever wonder what's the order of a sentence in English? Do you have questions that you forgot to ask during class? This is the extra activity for you! At Study Club, you can get the answers to your most burning questions about any English-language related topics.



Learn everything you need to know about grammar in English during our grammar class. From the difference between the present simple and the present continuous to the correct use of the perfect tenses, this Grammar class will allow you to strengthen your skills in a fun and entertaining manner.



Need help preparing for the TIE exam? In this class, you will learn how to do well in this spoken and written exam. Teachers help you with all aspects of the preparation, from filling out the application to improving your written and speaking skills.



Assistance & Services



Health Insurance

It is a requirement for Non-EU students on Study Visas to take out private health insurance. Student Campus will arrange health insurance for Non-EU students who do not have health insurance in place.

These policies cover emergency medical expenses, emergency travel and repatriation expenses, and are compliant with the applicable visa regulations.



Accommodation

Where you choose to live is a very important decision in your study abroad experience. We manage two well-serviced accommodations to help you while you find a permanent place to live.

If student accommodation is not an option for you, there are other options to suit your lifestyle, budget and needs.

Student Campus Limerick has partnerships with several student accommodations and host families in Limerick, offering stays up to 2 weeks in shared and double rooms. All houses are fully equipped, with easy access to the school and close to main means of transport, in addition to offering all the comfort that our students need.



Exclusive Pick-Up Service

Is it your first time coming to Ireland? Don't worry! We will pick you up at the bus stop in the city centre.

As part of the support, we also offer an exclusive pick-up service, where we will collect you at the bus stop in the city centre, go with you to do your first shopping trip at the supermarket in order to make you feel comfortable and safe.

Student Support

Living abroad can be challenging, and to ensure that your stay in Ireland will run as smoothly as possible, you can count on our Student Support team who are committed to providing you with assistance during your whole journey.

You will be assisted from the moment you leave your country right up to the moment you fly back.



Bank Account

To support daily life in Ireland, at Student Campus, every student is able to open their Irish bank account at our partner AIB bank.

You will be assisted by one of the members of our team to ensure that the process goes well if you are not 100% confident with your English language skills.

This is one of the exclusive services Student Campus provides for you.

Visa Information

If you want to study in Ireland for longer than 90 days, you must choose a course from the Interim List of Eligible Programmes (ILEP) such as, English Language programmes lasting at least 25 weeks.

You do not need an Irish visa to travel to Ireland if you come from a Non-Visa Required Country, and the its list you can check on the Irish Immigration official website.

All non-EEA nationals, including those with visas, must obtain permission to enter the State by reporting to an Immigration Officer at the port of entry. The members of the EEA are the 27 countries of the European Union (EU), together with Iceland, Norway and Liechtenstein.

You must still register at your local immigration office after you arrive. You need to get an Irish Residence Permit (IRP) if you are studying for more than 3 months.

You should have all documentation relating to your studies on your person when coming through immigration. In other words, you should have your letter of offer of a place at the school, or educational institution ready for inspection at immigration.

The GNIB will issue you with a residence permit/IRP card. The fee for this card is €300 and must be paid by credit card.



Important Notice

The information contained on this page was extracted from a reliable website, however, each individual must check by itself the requirements for its application.

Source: <https://www.citizensinformation.ie>

Refund Policy

Grounds for a refund or partial refund of fees:

- a) Irish Study Visa extension refusal (for students who are not successful in obtaining their visa). Any application for a refund must be made in writing and must be accompanied by both a copy of the rejection letter from the GNIB and a copy of their stamped passport. Please note: the rejection letter issued by the GNIB will be evaluated by the College in order to assess grounds for any refund and have complete discretion in arriving at a decision as to whether or not a refund is appropriate. All original letters issued by the College along with the student's GNIB card must be returned to the Student Campus administration before any refund can be considered.
- b) If an aspect of the application for a refund or cancellation includes an illness or disability suffered after the student's enrolment has been confirmed. In any such instance, a doctor's certificate would be required to confirm.
- c) Upon arrival in Ireland, should any student be refused access into Ireland for any reason, any application for a refund must be made in writing and be accompanied by both a copy of the rejection letter from the GNIB and a copy of their stamped passport. Please note: the rejection letter issued the GNIB will be evaluated by the College in order to assess grounds for any refund and it will have complete discretion in arriving at a decision as to whether or not a refund is appropriate.
- d) A refund will only be granted in respect of fees that have been paid for the most recent year in which (a), (b) or (c) occurs. There is no automatic right to a refund of fees if at any time a student changes his/her mind about studying at Student Campus.
- e) After course commencement, any student wishing to submit a refund request for any reasons as specifically detailed above (a, b or c) will be required to have achieved a minimum attendance of 85% in accordance with GNIB student visa requirements at the time of request.
- f) If a student withdraws after course commencement, no refund will be given.
- g) Students that are found to have provided incorrect information resulting in their visa being refused shall be exempt from any form of refund.
- h) Please note an Administration fee of €300, plus €150 for the health insurance fee (if already applied) and plus €150 for learner protection (if already applied) will be deducted from all refunds given. Bank transfer and international tax fees also apply.
- i) If you miss your flight or it is delayed, you must notify the school or your agent in advance. Otherwise, the transfer may not be refunded.
- j) If you give up or stop staying at the accommodation during the period booked, a refund will not be given.
- k) If the refund is applicable, it must be requested online through www.studentcampus.ie (Refund Form). The period for a refund is 8 to 12 weeks.

Student Campus App

Student Campus offers many services to our students, and our Student Campus App is one of them.

To make your life easier from anywhere, you can check all the services through the app, such as Attendance, Important dates, Extra Activities, Request Letters, Holidays, External Exams, Admission Criteria, and all the Student Campus Policies, and much more!

If you have any question about our services or policies, feel free to click on 'Contact Us', and drop a message or email.



Attendance

If you would like to check your attendance, you can register a new user using your Student ID. This information was given to you when you started your class with Student Campus, and it is also available in your enrolment letter.

Resquest Form



If you would like to request any documentation from our Academic team, such as, certificates, holidays letters, attendance letter or any other doubts you might have you can click on 'Request Form' and fill out the form.

We will get back to you within **72 working hours**.

Download the app now and enjoy the experience!

If you need any direct support or have suggestions for the app, you can send an email to alan@studentcampus.ie.



Once you download the app, you can click in:

- 01 Attendance
- 02 Register New User
- 03 Insert your Student Number
- 04 Email
- 05 Password
- 06 Confirm Password

After that, you need to click on 'Register Now' and you are all set.



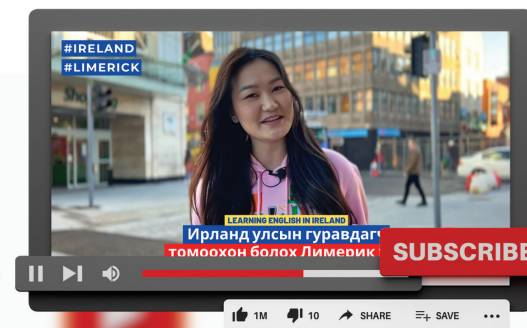
Media Channels

Have you ever seen our Social Media Channels?

Student Campus is connected to all Social Media platforms such as Instagram, Facebook and also on Youtube.

Subscribe to stay tuned for everything happening at the school and in Limerick.

IG: [studentcampuslimerick](#)
Facebook: [studentcampuslimerick](#)
Youtube: [studentcampuslimerick](#)



Additional Information

Student Visa Requirements

A STAMP 2 VISA, which allows the student to work and study while staying in Ireland, is granted for a student who comes to study for a 33 week English course. This visa will be obtained directly in the country, after the student's arrival. To get this visa, the following requirements must be provided by the students:

- Proof of Funds*
- Valid passport
- Roundtrip flight ticket
- Enrollment letter from the school
- Health Insurance & Learner Protection
- €300 Visa fee

*Non-Visa Required Nationalities €4.200
*Visa Required Nationalities €10.000

Visa Orientation / Induction Day

As part of the exclusive support offered by Student Campus, you will be able to count with an exclusive agent to support you throughout your visa application and your school life journey.

During Induction day, which takes place every Thursday, our Director of Studies explains our rules and policies regarding academic life to all students joining the campus.



Job Opportunity

Ireland allows students enrolled on the 25 week English course to legally work up to 20 hours part-time per week during term time or up to 40 hours per week during holiday periods, that is, from June to September inclusive and from 15th of December to the 15th of January.

Flight Tickets

The student is fully responsible for purchasing their flight tickets. Approximately €600.00 to €700.00. Check the Airlines.

Monthly Average Expenses

This is an estimated expense.
Does not include extra expenses.
Fees may vary according to each student's lifestyle.

The financial proof of funds can be used for the student's monthly expenses after getting the visa.

€400 - €500/month - Accommodation
€50/month - Bills (Electric bill/Internet/Bins)
€150/month - Food
Total: €600 - €700/monthly

